

Bus & Coach - Product Applications



Product	Part Number	Application
Dry Lube	50180	• Driver sun blinds, ramp struts and where you want to repel dirt and dust
K44 Silicone Grease	86005	• Rebuilding brake calipers, electrical connections
High Strength Tape	Various	• Bonding LED information screens / destination boards
Ceramic 1200	Various	• Lubrication of high temperature parts
Adhesive Shim Stock	Various	• Eliminates wind, water and dust leaks on windows, doors and hatches
Sanitary Cleaner & Descaler	86469	• Removal of water marks on glass
Patch n Bond Steel	86025	• Repairing various metal and threads inc. intercoolers - can be drilled, shaped and tapped
Etch Primer	83270	• Bare metal priming
Zinc Alu Spray	85479	• Recoating after repair/welding
Rubber Guard	50110	• Protection for wheel wells and undercarriages
Toughcoat	Various	• Underfloor protection
Performance Abrasive	85681	• Removing scuffs and marks from bodywork
All Purpose Foam Cleaner	84909	• Cleaning of all interior surfaces inc glass, plastic, upholstery
Acrysol	Various	• Cleaning and degreasing of all surfaces
Quick Freeze	34036	• Removal of chewing gum from seats and other areas
Glass Kleen	86440	• Quickly penetrates interior dirt and scum, leaves a pleasant fragrance
Special Release Agent	30125	• Fast removal of badges and floor lining
Electric Cleaner 2	34621	• Removal of grease and oxidation in electrical circuits
S100 Silicone Grease	34920	• Insulation of connections in electrical circuits
Solder Splice	Various	• Water tight connections in electrical circuits
Ignition Drier	60495	• Water dispeller on ignition systems
Fusion Wrap	34725	• Insulation/repair of electrical circuits and repair water/fluid hoses
SL85 / SL500	Various	• Lubrication of door rubbers
PTFE+ Lubricant	84065	• Lubrication of door hinges
Plastic Filler	34761	• Filler for repairs on bumpers and all plastic
Blue Grease	Various	• Lubrication of exposed linkages and battery terminals
White Line Abrasive Discs	Various	• Fast and safe removal of paint and filler
Rapid Sand	83344	• Flexible filler for repairs on body panels
Screenfix	Various	• Bonding glass / windscreens
Oil Emulsifier	84666	• Removal of oil from cooling system
Premium Refinishing Filler	85829	• Filling holes and imperfections on steel, aluminium and plastics



Bus & Coach Product Applications

A selection of KENT products which are ideal for the maintenance, repair and cleaning of buses and coaches.



BUS & COACH - PRODUCT APPLICATIONS

MECHANICAL

Part No. - 86005

K44 SILICONE GREASE

Silicone oil based, moisture protecting lubricant.

Rebuilding brake calipers, electrical connections



Part No. - 34725

FUSION WRAP BLACK

Flexible self vulcanising insulating wrap.

Insulation/repair of electrical circuits and repair water/fluid hoses



Part No. - 83688, 84339

SL85 / SL500

A high adhesion, penetrating grease.

Lubrication of door rubbers



Part No. - 83972

ANTI-SEIZE

High-grade temperature-resistant copper grease.

High temperature copper grease for assembly and disassembly



Part No. - 83925, 83930

ACRYSOL

Powerful solvent for degreasing surfaces.

Cleaning and degreasing of all surfaces



Part No. - 34036

QUICK FREEZE

Fast and safe cooling spray for controlled lowering of temperature.

Removal of chewing gum from seats and other areas



Part No. - 86440

GLASS KLEEN

Concentrated anti-fogging glass cleaner.

Quickly penetrates interior dirt and scum, leaves a pleasant fragrance

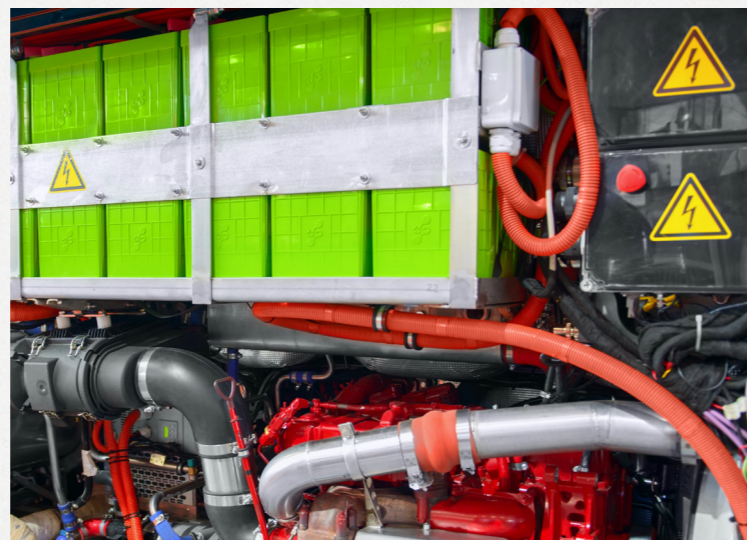


Part No. - 50180

DRY LUBE

Silicone free, dry lubricant spray.

Lubricates driver sun blinds, ramp struts and repels dirt and dust



ELECTRICAL

Part No. - 34920

S100 SILICONE GREASE

100% silicone protection.

Insulation of connections in electrical circuits

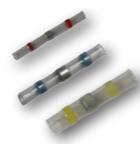


Part No. - 34059, 34063, 34064

SOLDER SPLICE

Shrink tube with solder for perfect connections.

Water tight connections in electrical circuits



Part No. - 34621

ELECTRIC CLEANER 2

Electric cleaner to remove oxidation.

Removes dirt, dust & oil from electrical components



Part No. - 60495

IGNITION DRIER AND PROTECTOR

Fast acting drying agent and for ignition systems.

Water dispeller on ignition systems



Part No. - 50110

RUBBER GUARD

Non-bitumen based, strong flexible underseal.

Protection for wheel wells and undercarriages



Part No. - 85479

ZINC ALU SPRAY

Zinc-based cathodic protection corrosion primer.

Recoating after repair/welding



Part No. - 85681

PERFORMANCE ABRASIVE

Coarse cut removes scratches fast and provides a deep gloss.

Removes scuffs and marks from bodywork



Part No. - 83270

ETCH PRIMER

Paint adhesion and corrosion protection primer.

Bare metal priming



EXTERIOR